

## Case Study

## Cartridge Solenoid valve DN16 NO

For a customer in the ventilation industry, we developed a customized special solution in a very short time to make his plant more efficient.



### Problem definition

The solution used so far included a solenoid valve with a nominal diameter of 8mm and, in addition, a pump to speed up the emptying process. This pump is to be saved by a new type of solenoid valve with a correspondingly large flow rate.

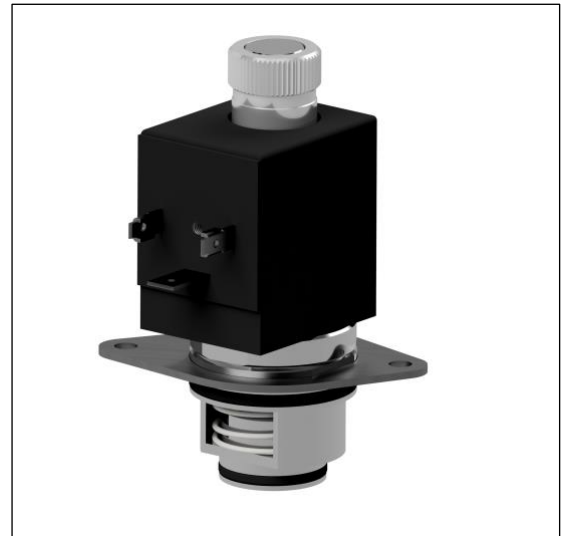
- NO solenoid valve DN8 too low flow
- Solenoid valve must be flangeable
- Reduce draining times from 45min to 30min



### Solution

Based on the previous solenoid valve solution with DN 8mm, a special cartridge valve was developed that can be flanged to the system according to the customer's requirements and provides the required high flow rate.

- Cartridge valve body with DN16mm
- Valve opening maximized to switching pressure 0,02bar
- Draining process shortened to 22min



### Customer Testimonial

Very fast cooperation: "Problem discussion and elaboration were handled pragmatically and iteratively. This enabled a short lead time to sample delivery and series production."



### Highlights

- 100% customer solution
- Requirement exceeded
- Perfect tailor-made customer solution