

## Case Study

### Solenoid valve block with built-in strainer and flow control

---

For a partner in valve technology, we have developed a customized special solution in a short development time, which combines a solenoid valve, with stainless steel strainer and flow control.



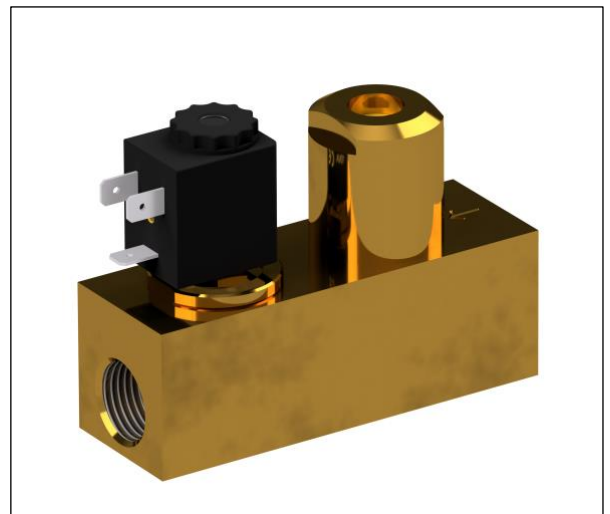
#### Problem definition

- Individual components require too much space
- Sealing points should be avoided if possible
- Accessible adjustable flow control
- The screen should be easy to remove for cleaning purposes.



#### Solution

- A brass valve block in which all functions are combined
- Solenoid valve made of standard components
- Stainless steel strainer with matching mesh size
- Adjustable flow control via fine-thread spindle
- Solution 100% customized



#### Customer Testimonial

By placing all functions in one block and the fast development time, we were able to provide our customer with a perfect custom solution.



#### Highlights

- Collective block for all functions
- Low installation effort
- 50% space saving
- Simple flow control
- Sealing points reduced